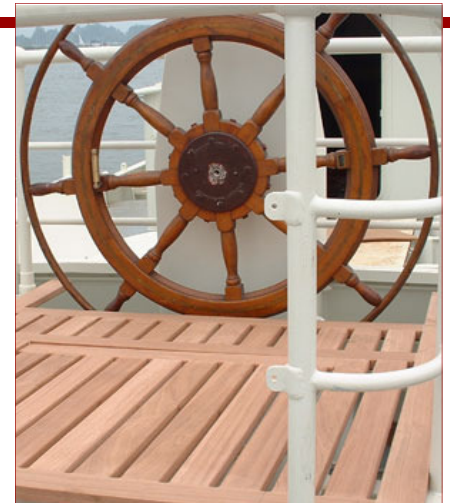


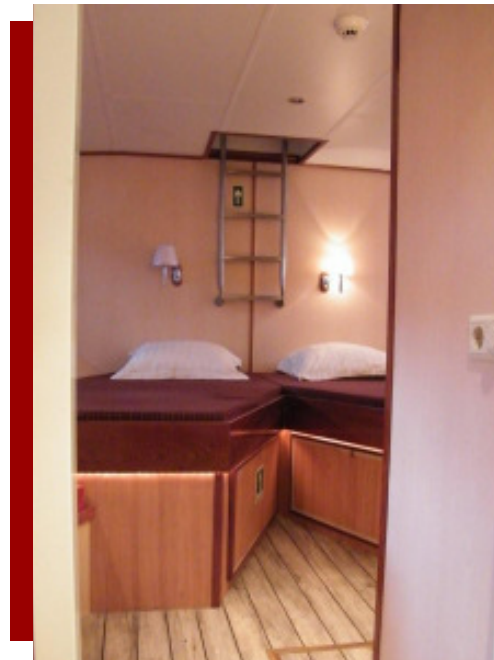




- **Day and evening cruises, up to 36 passengers**
- **Receptions moored in a port, up to 40 passengers**
- **Weekend incentives, up to 10 passengers**
- **Week cruises, up to 10 passengers**
- **Excellent ships own catering**





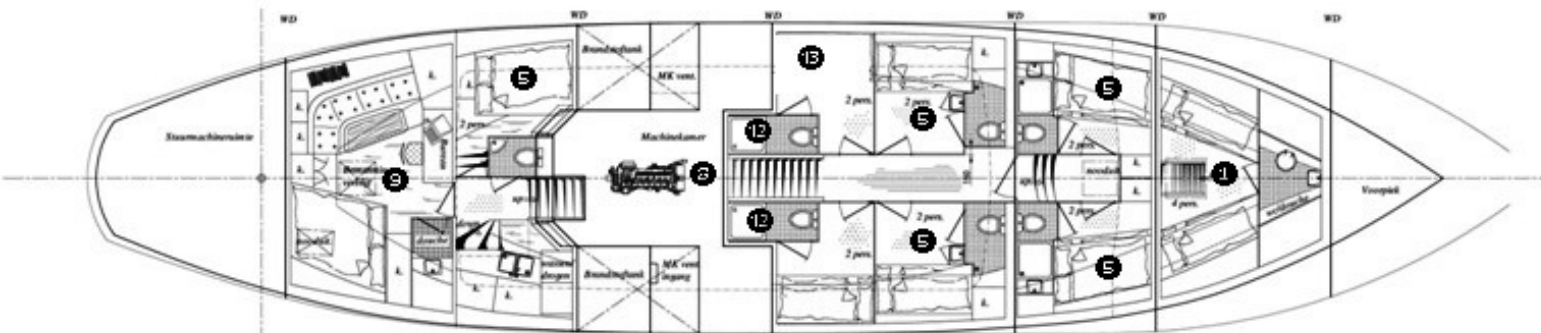
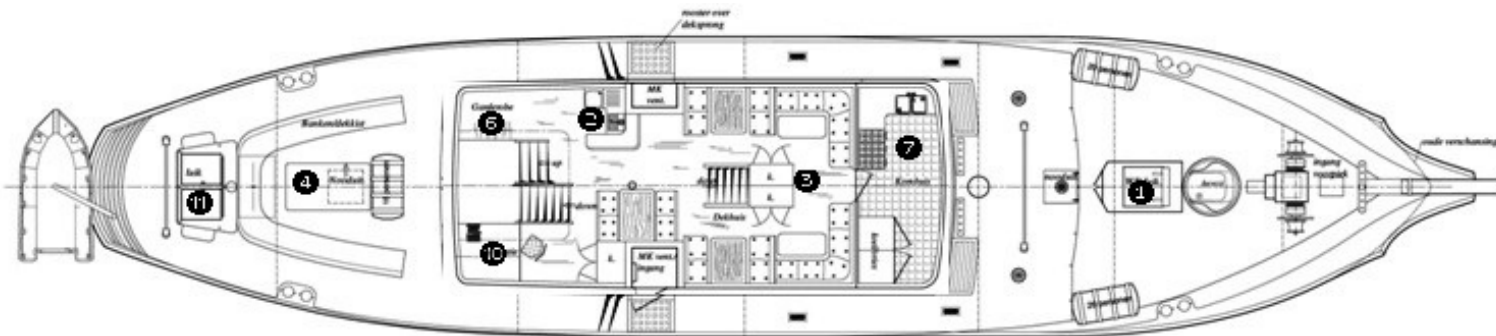


## ***INTERIOR***

**On board we offer excellent ships own catering**

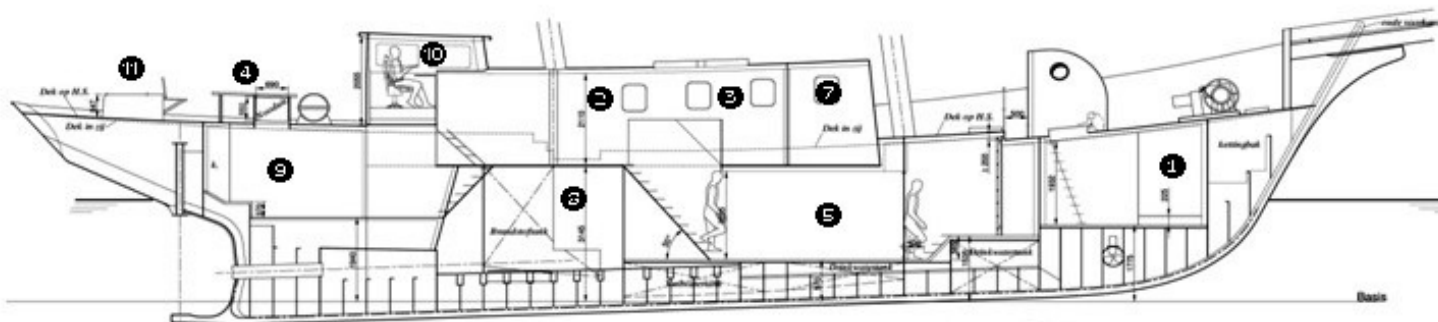
- Wide range of alcoholic/ non alcoholic beverages
- Cocktails and long drinks
- Welcome canapés
- Brunch buffet
- Finger food/flying buffet
- Lunch/dinner buffet
- Seated lunch/dinner
- Barbecue on deck
- Cake/fruit buffet

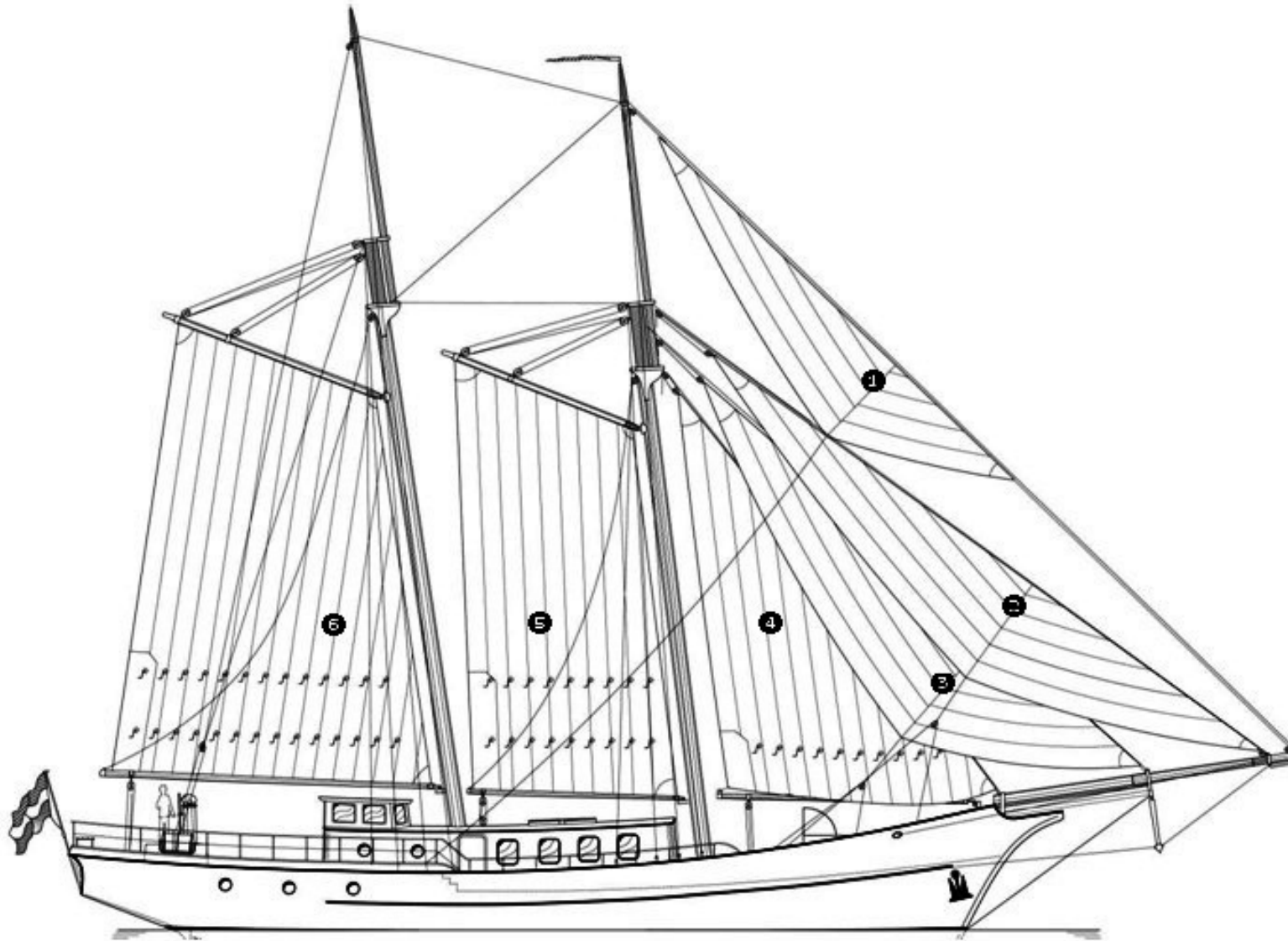




## ***SHIPS PLAN***

- (1) Crew`s quarters
- (2) Bar
- (3) Restaurant for 12 persons
- (4) Aft deck + Sitting group
- (5) Guest cabins + bathroom
- (6) Cloakroom
- (7) Galley
- (8) Engine room
- (9) Captain`s quarter + office
- (10) Chart room
- (11) Flybridge
- (12) Guest WC
- (13) Laundry
- (14) Store





## ***SAIL PLAN***

- (1) Outer jib** (full gear)
- (2) Jib** (standard sail)
- (3) Inner jib** (standard sail)
- (4) Foresail** (storm sail)
- (5) Schooner** (standard sail)
- (6) Mainsail** (standard sail)
  - 1. Reef** (standard sails
  - 2. Reef** (storm sail)

**Total sail area: 320 m<sup>2</sup>**

## ***GENERAL DATA***

<b>Ship's name</b>	Eldorado
<b>Home port</b>	Amsterdam
<b>Register number</b>	21422 Z 2007
<b>Year built</b>	2009
<b>Trading area</b>	NS 1*, European Directive area B, worldwide
<b>Classification</b>	Holland (RH) Z1234+, CCV
<b>Call sign</b>	PC
<b>Gross tonnage</b>	112 GT
<b>Displacement</b>	160 t
<b>Main engine</b>	Scania DS14, VB, 435 hp
<b>Generators</b>	2 x Mitsubishi silent pack, 30 kw
<b>Length over all</b>	38,00 m
<b>Beam</b>	6,50 m
<b>Draught forward/aft</b>	3,00 m
<b>Type of rigging</b>	Spanker gaff topsail schooner
<b>Masthead height</b>	27,00 m
<b>Sail area</b>	320 m <sup>2</sup> on 6 sails
<b>Maximum speed</b>	12 knots under sails 9 knots under engine
<b>Passenger capacity</b>	36 for day and evening cruises 40 for receptions alongside 10 for weekend incentives 10 for week cruises
<b>Crew</b>	6 (Skipper, engineer, sailor, chef cook, service)

